



REGU[®]-FADE

The most effective solution for noticeably brighter skin

REGU[®]-FADE helps reduce the appearance of skin pigmentation as demonstrated in clinical and *in vitro* studies, resulting in noticeably brighter, younger-looking skin.

It uses pure nature-identical trans-resveratrol that is free from pesticides and emodin, a potential concern with other forms of resveratrol. Resveratrol is a known potent antioxidant found in red grapes and associated with various health benefits.

A Growing Segment

Skin brightening is one of the fastest growing segments in the cosmetic industry. In Asia, skin brighteners are widely used to make skin more appealing. In Western countries consumers want to diminish age spots, reduce excessive pigmentation and achieve an even skin tone. As a consequence, these markets are looking for increasingly efficient, fast-acting skin brighteners. At the same time, these actives must be absolutely safe for cosmetic use.

REGU®-FADE is a high performing and fast-acting, nature-identical, pure resveratrol - a "bright idea" for your new skin formulation.

Key facts

Benefits

- Visibly brighter skin
- Nature identical pure trans-resveratrol for more effective and even skin brightening
- Fast-acting

Cosmetic application

- Skin brightening facial and body care products
- Creams and serums for age spots
- Anti-aging skin care products for more even skin tone

Suggested concentration

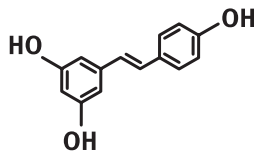
- Up to 1% REGU®-FADE in cosmetic formulations

INCI name

- Resveratrol

Structure

- trans-Resveratrol (molecular weight: 228.25 g/mol)

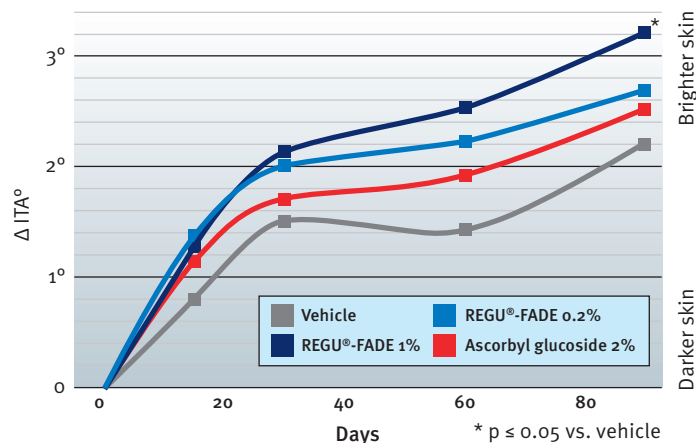


Efficacy

Long-term study†

A double-blind, placebo-controlled study was performed on 52 Indian female volunteers. Per test area a cream (SPF ~10) plus test substance was applied twice daily on the forearms. Colorimetric measurements were performed after 14, 28, 60 and 90 days respectively.

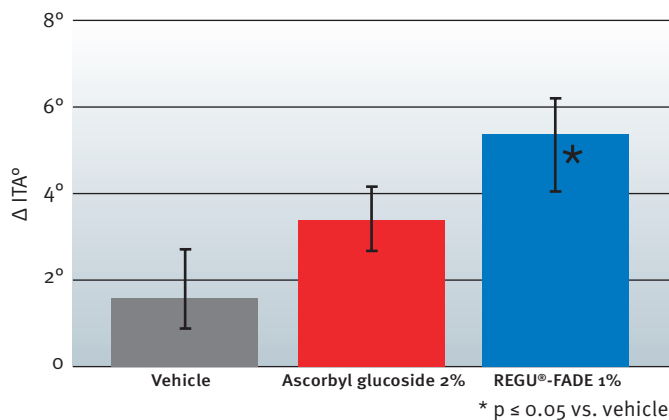
REGU®-FADE achieves significant skin brightening



Short-term study†

A double-blind, placebo-controlled study was performed on 12 Caucasian volunteers. Per test area creams were applied 3 times per day on the forearm. Colorimetric measurements were performed after 14 days.

Visible and significant skin brightening in 2 weeks with 1% REGU®-FADE



†Data available upon request

North America

DSM Nutritional Products, LLC
45 Waterview Boulevard, Parsippany, NJ 07054
United States of America
Phone: +1 800 526 0189
Fax: +1 973 257 8580
Email: webshop.dnpna@dsm.com

www.dsmnutritionalproducts.com

© 2011 DSM Nutritional Products AG, 4002 Basel, Switzerland

All rights reserved. No part of this brochure may be reproduced, distributed or translated in any form or by any means, or stored in a database or retrieval system, without the prior written permission of DSM Nutritional Products AG ("DSM"). While making reasonable efforts to ensure that all information in this brochure is accurate and up to date, DSM makes no representation or warranty of the accuracy, reliability, or completeness of the information. Use of this information shall be at your discretion and risk. Nothing herein relieves you from carrying out your own suitability determinations and tests and from your obligation to comply with all applicable laws and regulations and to observe all third party rights. The uses and claims for DSM's products recommended in the brochure should be adapted to the current local regulatory environment. We disclaim any and all liability in connection with your product or its use.